

**MARLBORO
HIGH SCHOOL**
1,837 students

BEAR BROOK COMMONS
Wawa THE **POOLSHOP**
KUMON **PLAYA BOWLS**
LA ROSA **RED TOMATO**
CHICKEN & GRILL URBAN PIZZERIA

**AVAILABLE
+/- 2,013 SF**

M&T Bank

Bear Brook Commons

455 Route 520, Marlboro

Availability

- +/- 2,013 SF

Traffic Count

- Route 79: 17,639 VPD
- Route 520: 12,800 VPD

Co-Tenants

- Bagel World
- La Rosa
- Playa Bowls
- Red Tomato Urban Pizzeria
- Kumon
- M&T Bank
- The Pool Shop
- Wawa

Demographics

Radius	Population	Total Daytime Population	Median Household Income
1 Mile	3,592	3,639	\$195,832
3 Mile	32,996	27,372	\$198,854
5 Mile	102,466	97,434	\$165,732

For Lease - Contact

Gregg Medvin
 Ph. 732-724-3962
 gregg@piersonre.com

PIERSON
 COMMERCIAL REAL ESTATE®

Bear Brook Commons

455 Route 520, Marlboro

Site Description

- Bear Brook Commons is situated at the main-and-main signalized intersection of Route 79 and Route 520 in the heart of Marlboro Township, consisting of approximately 30,000 vehicles per day visiting the intersection and within walking distance from Marlboro High School, with over 1,800 students.
- The shopping center is Wawa-anchored with strong co-tenancy consisting of M&T Bank, Kumon, the original La Rosa Chicken, Playa Bowls and a strong mixture of other daily need co-tenants and food options. The center shares access with Walgreen's, which can be found in the rear of the subject site.
- Significant median incomes of approximately \$195,000 within 1 mile.

Market Aerial



For Lease - Contact

Gregg Medvin

Ph. 732-724-3962

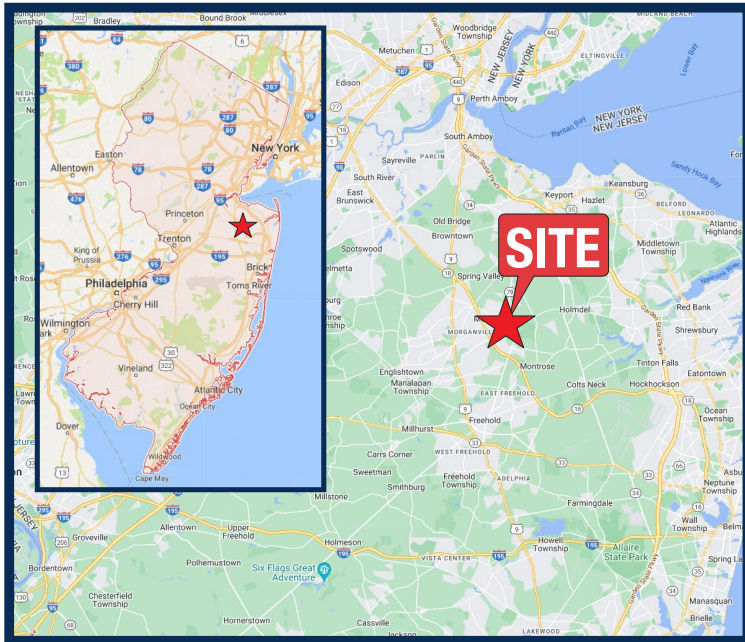
gregg@piersonre.com

PIERSON
COMMERCIAL REAL ESTATE®

Bear Brook Commons

455 Route 520, Marlboro

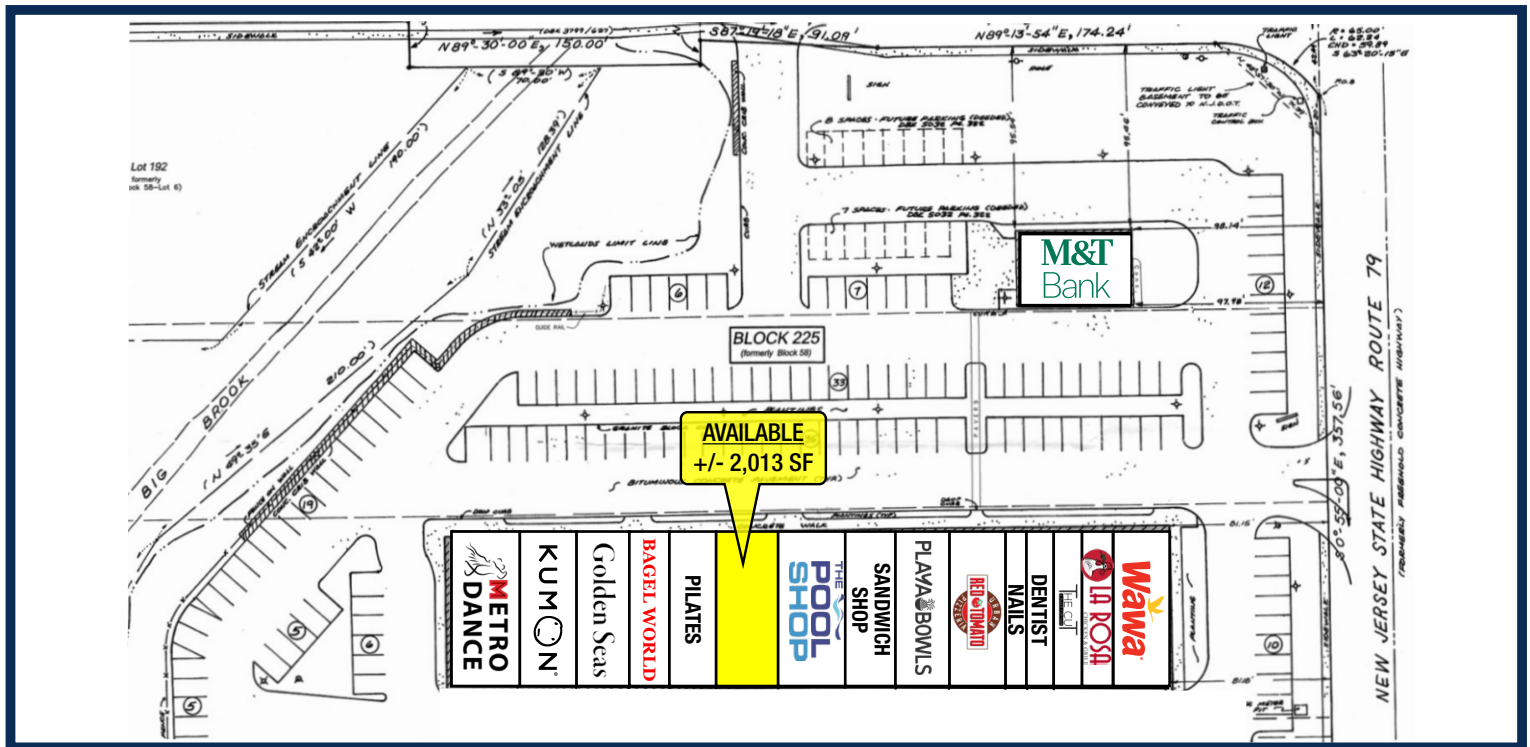
State Map



Micro Market Aerial



Site Plan



For Lease - Contact

Gregg Medvin

Ph. 732-724-3962

gregg@piersonre.com

PIERSON
COMMERCIAL REAL ESTATE®

© Pierson Commercial Real Estate LLC. This information has been obtained from sources believed reliable. We have not verified it and make no guarantee, warranty or representation about it. Any renderings, mobile data, general data, projections, opinions, assumptions or estimates used are for example only and do not represent the current or future performance of the property. You and your advisors should conduct a careful, independent investigation of the property and data to determine to your satisfaction the suitability of the property for your needs.