

**SALE**

**FULL BUILDING  
BRANDING  
OPPORTUNITY**

# 157 Market Street Newark, New Jersey

## Size

- Ground Floor: +/- 3,593 SF
- Second Floor: +/- 3,510 SF
- Basement: +/- 3,914 SF

## Asking Price

- Please Inquire

## Taxes

- \$34,558

## Surrounding Retail



## Demographics

Radius	Population	Daytime Population	Median HH Income
1 Mile	61,627	90,924	\$52,000
2 Mile	217,580	213,032	\$51,600
3 Mile	392,659	336,408	\$52,400

## Retail for Sale - Contact

Ryan Starkman  
Ph. 732-724-4501  
ryan@piersonre.com

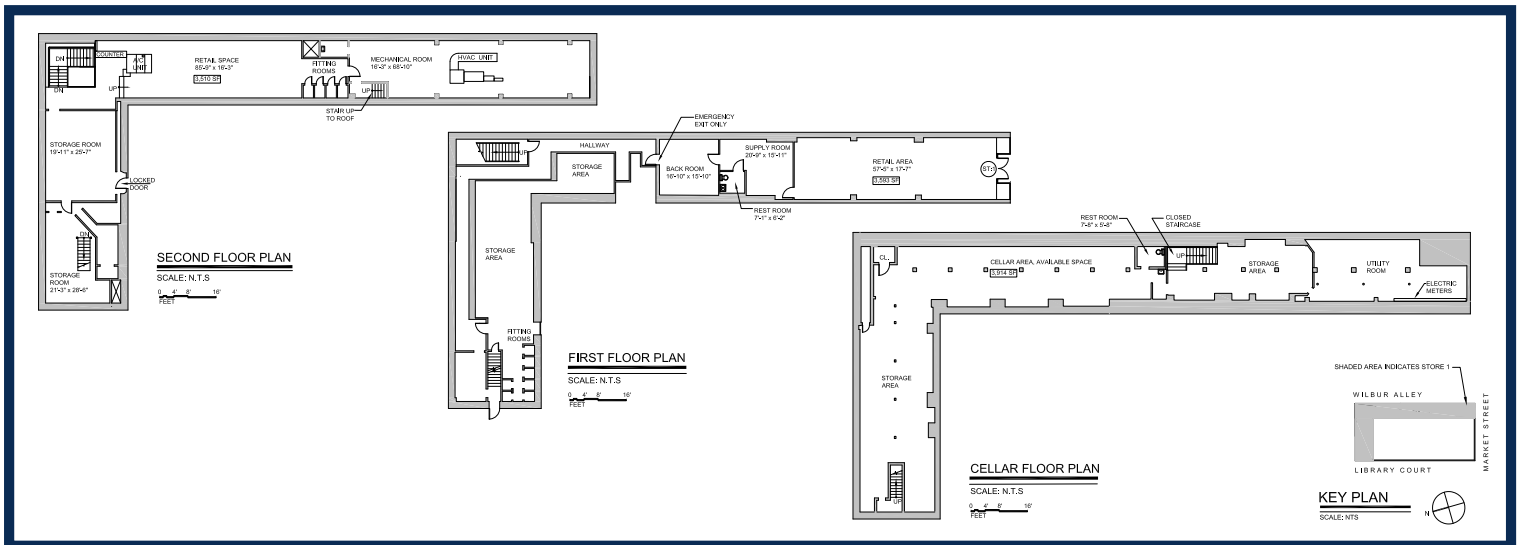
**PIERSON**  
COMMERCIAL REAL ESTATE®

# 157 Market Street Newark, New Jersey

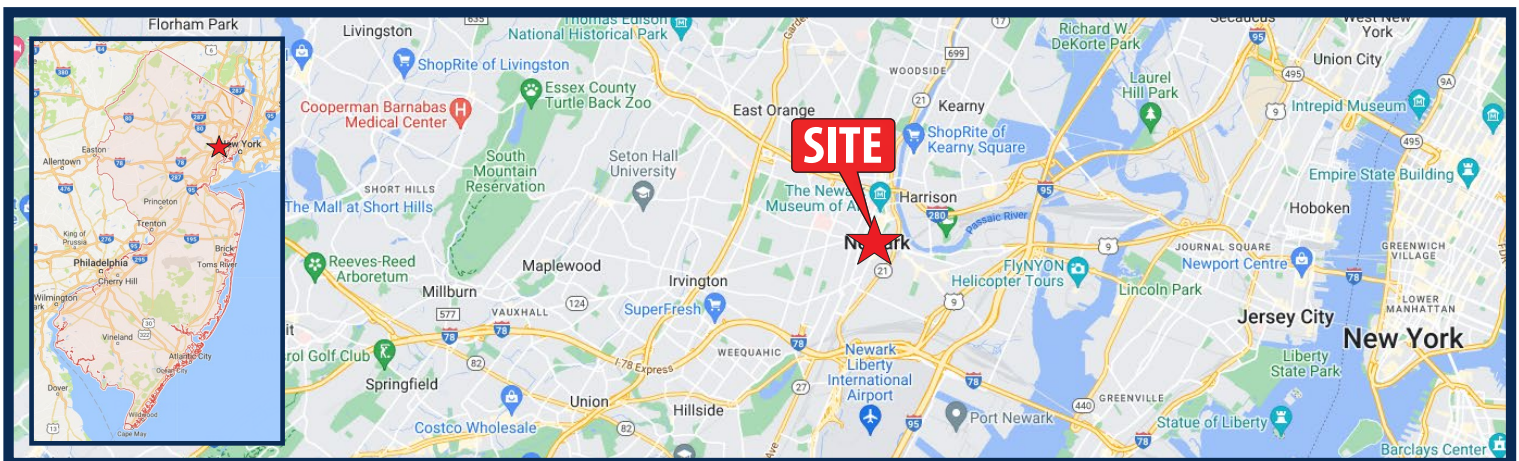
## Site Description

- Prime retail building available for sale in the heart of Downtown Newark on the busiest street in the city
- Full-building branding opportunity just off the corner of Broad and Market Streets
- Tremendous daytime employee population generated by Newark's 14.5 million SF of office space and residential population density in the immediate area
- Located within walking distance from the 2.5mm SF Gateway Center Complex, Newark Penn Station, Teachers Village, City Call, Prudential Arena, Prudential HQ, Panasonic HQ and more
- Several thousand new residential units in various stages of the cities development pipeline

## Floor Plan



## State Map



## Retail for Sale - Contact

Ryan Starkman

Ph. 732-724-4501

[ryan@piersonre.com](mailto:ryan@piersonre.com)

**PIERSON**  
COMMERCIAL REAL ESTATE®



# 157 Market Street Newark, New Jersey

## Market Aerial



## Retail for Sale - Contact

Ryan Starkman  
 Ph. 732-724-4501  
[ryan@piersonre.com](mailto:ryan@piersonre.com)

**PIERSON**  
 COMMERCIAL REAL ESTATE®

© Pierson Commercial Real Estate LLC. This information has been obtained from sources believed reliable. We have not verified it and make no guarantee or representation about it. Any renderings, mobile data, general data, projections, opinions, assumptions or estimates used are for example only and do not represent the current or future performance of the property. You and your advisors should conduct a careful, independent investigation of the property and data to determine to your satisfaction the suitability of the property for your needs.