



1515 **WOODBURY** **ROAD**
GLASSBORO

(BLOCK 36.06, LOT 1.01)
WENONAH, NEW JERSEY

For Sale - Contact

Jason Pierson
Ph. 732-707-6902
jason@piersonre.com

Neil Ruppert
Ph. 732-743-9938
neil@piersonre.com

PIERSON
COMMERCIAL REAL ESTATE®



DETAILS

Building Size

- +/- 3,964 SF

Asking Price

- \$1,050,000

Lot Size

- +/- 2.64 Acres

Taxes

- \$43,272 (2024)

Zoning: PO (Professional Office)

- Community residences
- Private recreation club
- Professional office or medical building
- Single family detached dwelling
- Two family dwelling on conversion only

Site Description

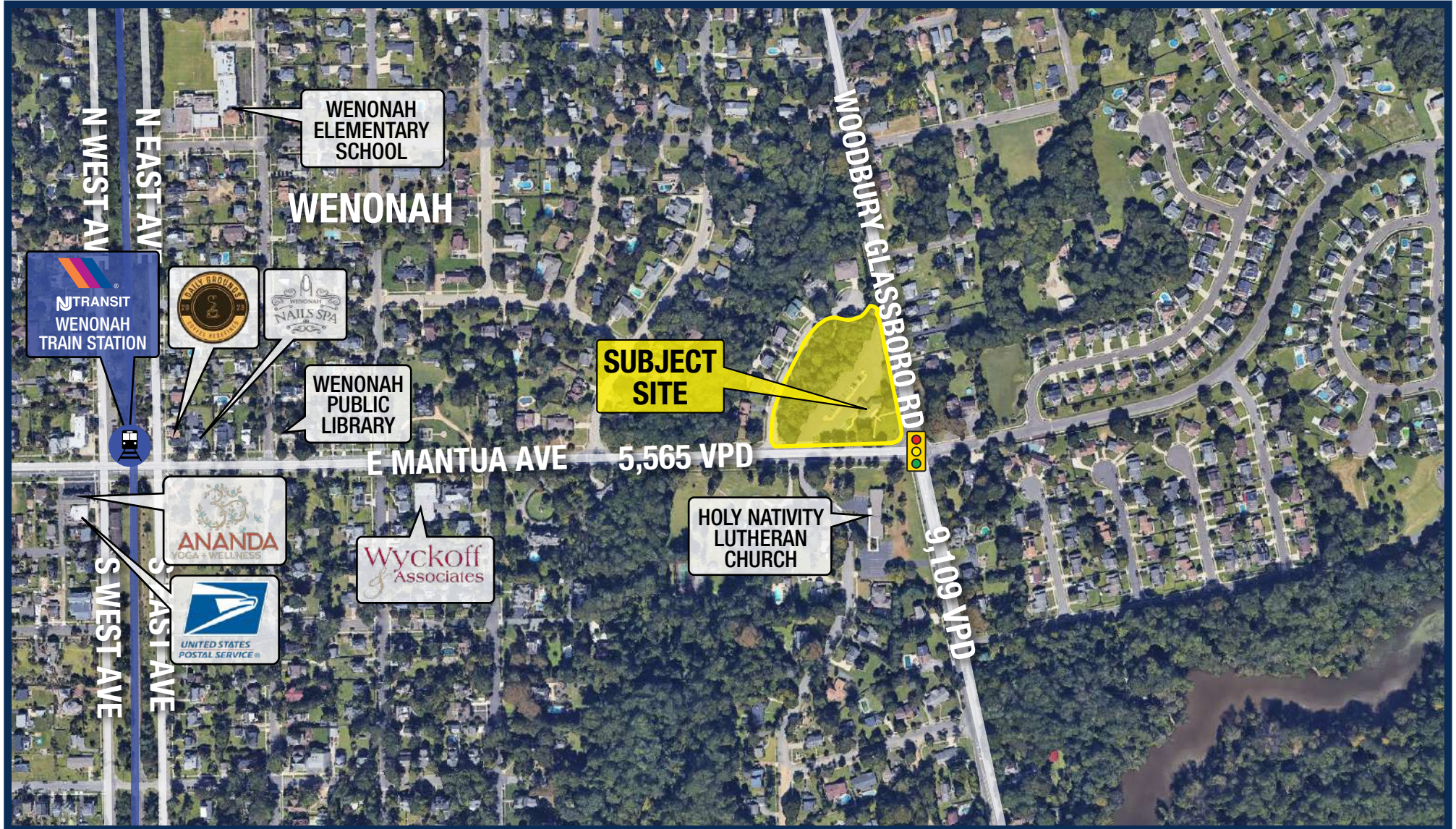
- Prime former +/- 3,964 SF freestanding bank on +/-2.64 acre parcel for sale at the traffic light controlled intersection of Woodbury Glassboro Road (County Road 553) and Mantua Avenue with full ingress and egress from both roads
- Pristine and exclusive stone façade
- Substantial parking with +/-28 spaces
- Recently remodeled replaced front windows, ceiling, flooring and parking lot resealed
- Delivered “As Is” free and clear of any tenancies
- Property will be deed restricted for 2 years against any financial institution

Demographics

Radius	Population	Total Daytime Population	Median Household Income
1 Mile	5,810	3,544	\$111,003
3 Mile	53,608	45,460	\$98,986
5 Mile	147,398	138,147	\$98,725

MARKET AERIAL

Micro Market Aerial

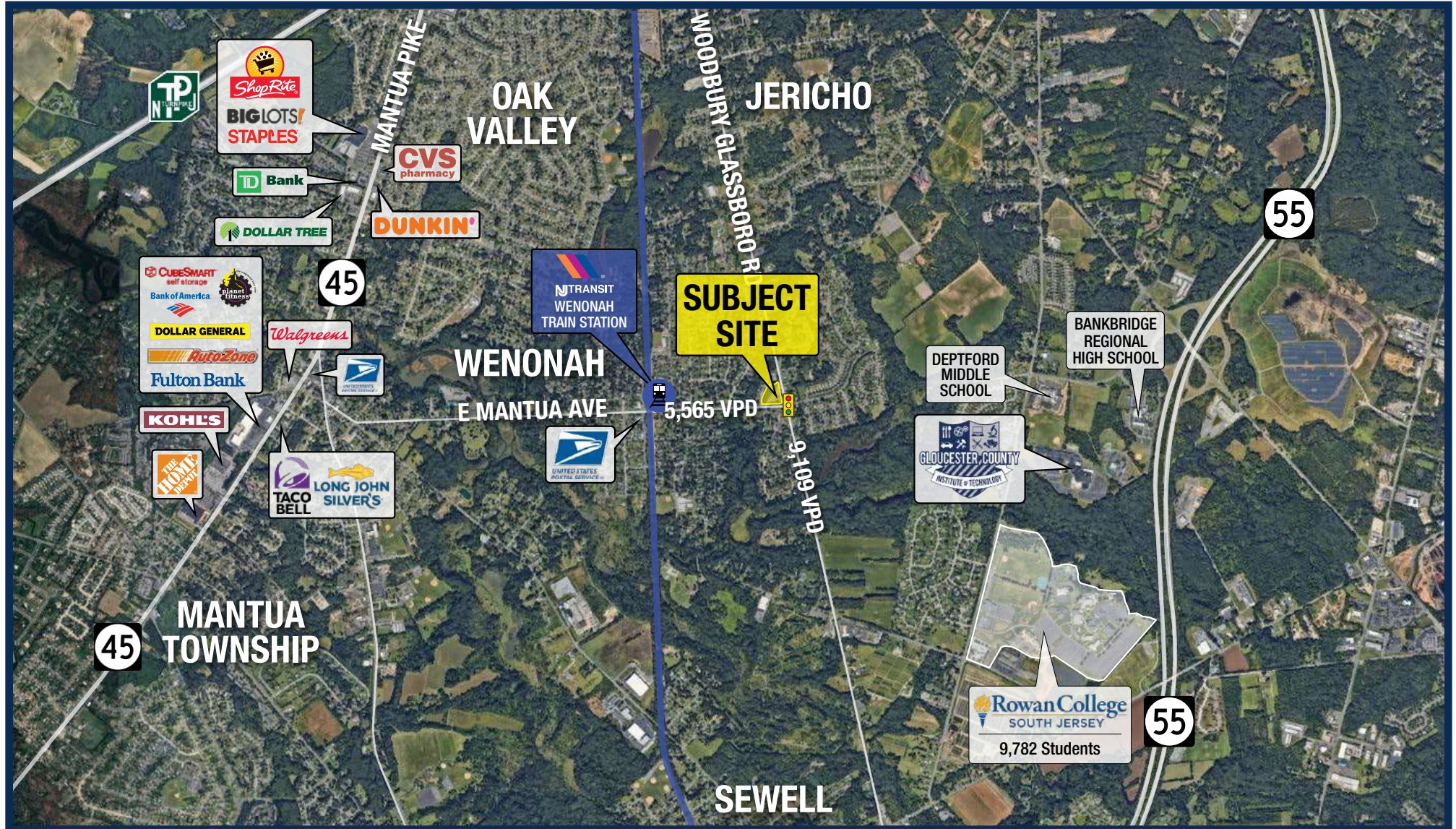


1515 WOODBURY
GLASSBORO ROAD

PIERSON
COMMERCIAL REAL ESTATE®

MARKET AERIAL

Macro Market Aerial



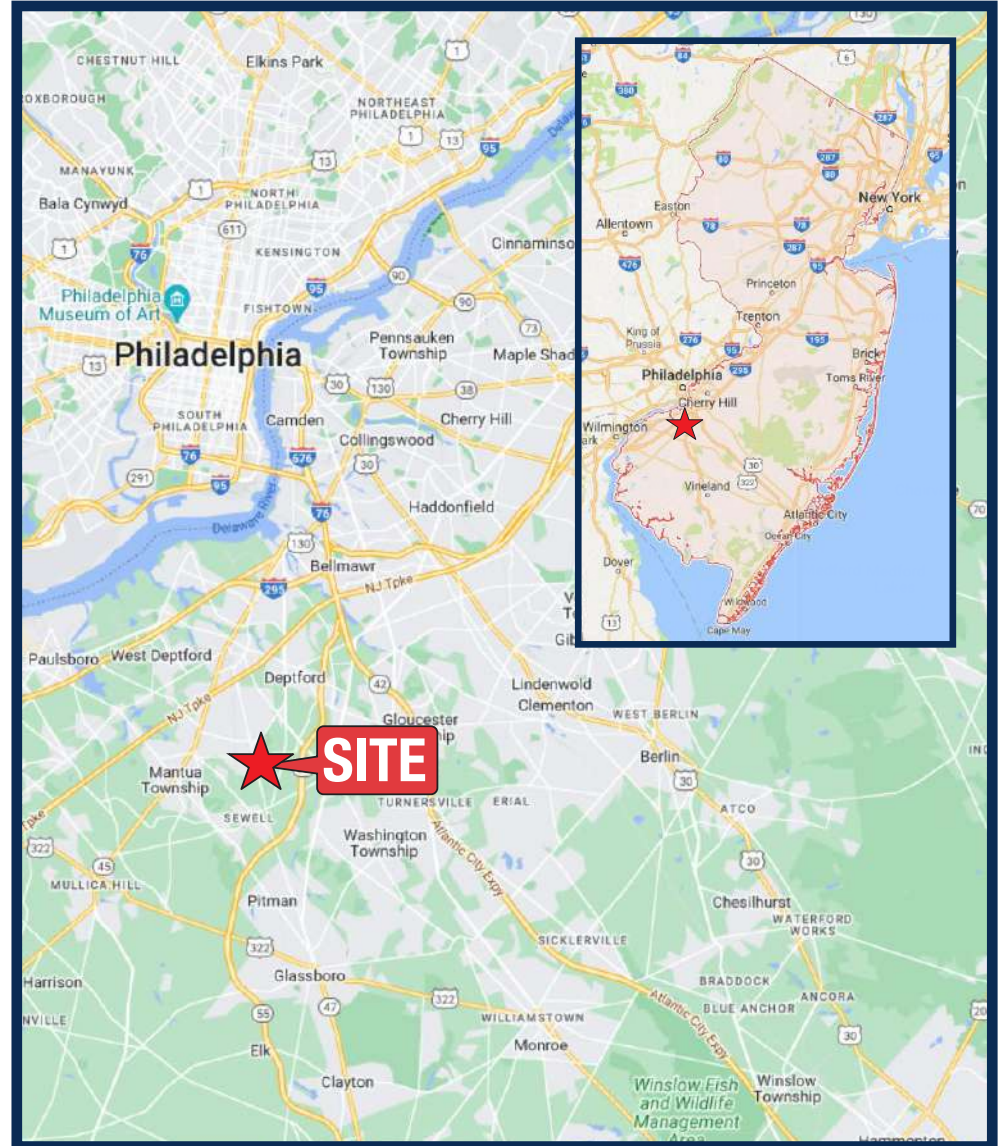
LOCATION

Estimated Property Line



1515 WOODBURY ROAD
GLASSBORO

State Map



PIERSON
COMMERCIAL REAL ESTATE®

1515

WOODBURY
GLASSBORO ROAD

(BLOCK 36.06, LOT 1.01)
WENONAH, NEW JERSEY

CONTACT



For Sale - Contact

Jason Pierson

Ph. 732-707-6902

jason@piersonre.com

Neil Ruppert

Ph. 732-743-9938

neil@piersonre.com

PIERSON
COMMERCIAL REAL ESTATE®

© Pierson Commercial Real Estate LLC. This information has been obtained from sources believed reliable. We have not verified it and make no guarantee, warranty or representation about it. Any renderings, projections, opinions, assumptions or estimates used are for example only and do not represent the current or future performance of the property. You and your advisors should conduct a careful, independent investigation of the property to determine to your satisfaction the suitability of the property for your needs.