



# The Waverly at Neptune

Route 66 and Jumping Brook Road, Neptune, New Jersey

## Availabilities

- +/- 1,575 SF (Vented)
- Last Space Available!

## Co-Tenants



## Demographics

Radius	Population	Total Daytime Population	Average Household Income
1 Mile	5,566	9,681	\$113,900
3 Mile	42,730	50,039	\$135,137
5 Mile	127,231	133,977	\$129,921

## Retail for Lease - Contact

Ryan Starkman  
 Ph. 732-724-4501  
 ryan@piersonre.com

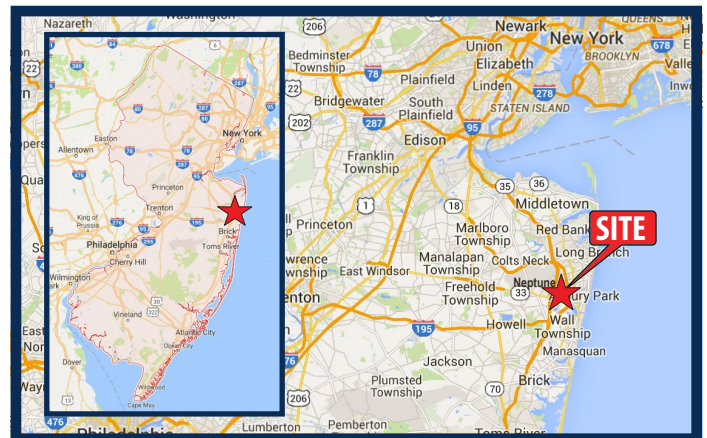
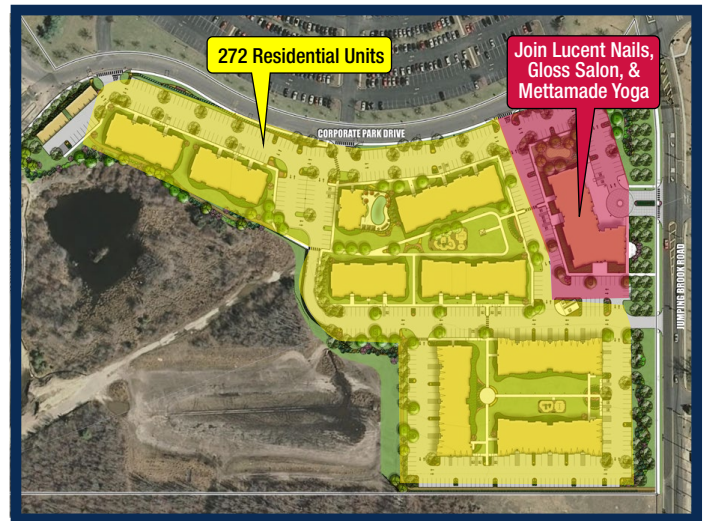
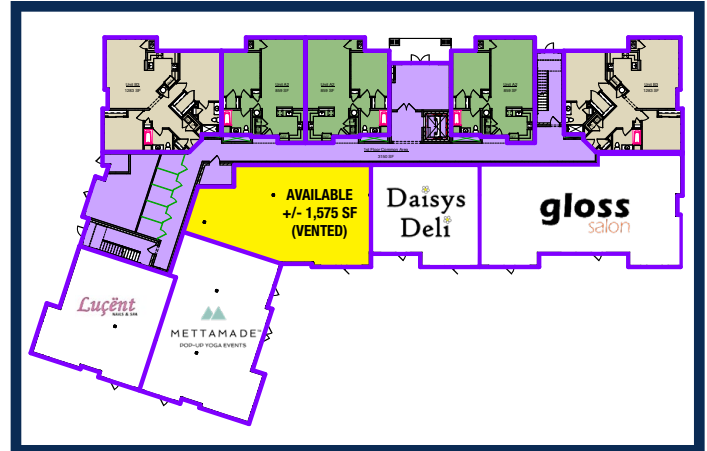




# The Waverly at Neptune

## Route 66 and Jumping Brook Road, Neptune, New Jersey

- Part of a 272-unit mixed-use development along the growing Route 66 corridor, and directly across from Neptune Little League field and a 151-unit adult townhome development
- Well-located near the prominent intersection of Route 66 and Jumping Brook Road
- Multiple points of ingress and egress out to Jumping Brook Road (including direct access into American General office complex) and Route 66
- Strategically surrounded by office buildings and warehouses as well as several other retailers, hotels, businesses and municipal sport fields
- Situated off exit 100A of the Garden State Parkway in route to major "Jersey Shore" beach communities
- Adjacent to the Jersey Shore Premium Outlets



### Retail for Lease - Contact

Ryan Starkman  
 Ph. 732-724-4501  
[ryan@piersonre.com](mailto:ryan@piersonre.com)

